

Optimised ABP formulation vs Horm collagen

Overview

ABP collagen was measured using light Aggregometry (Labitec Apact 4001) against Horm Collagen. Both Horm and ABP collagen were diluted using Horm diluent to give the following in platelet rich plasma:

- 10 µg/ml final concentration
- 5 µg/ml final concentration
- 2.5 µg/ml final concentration
- 1.25 µg/ml final concentration

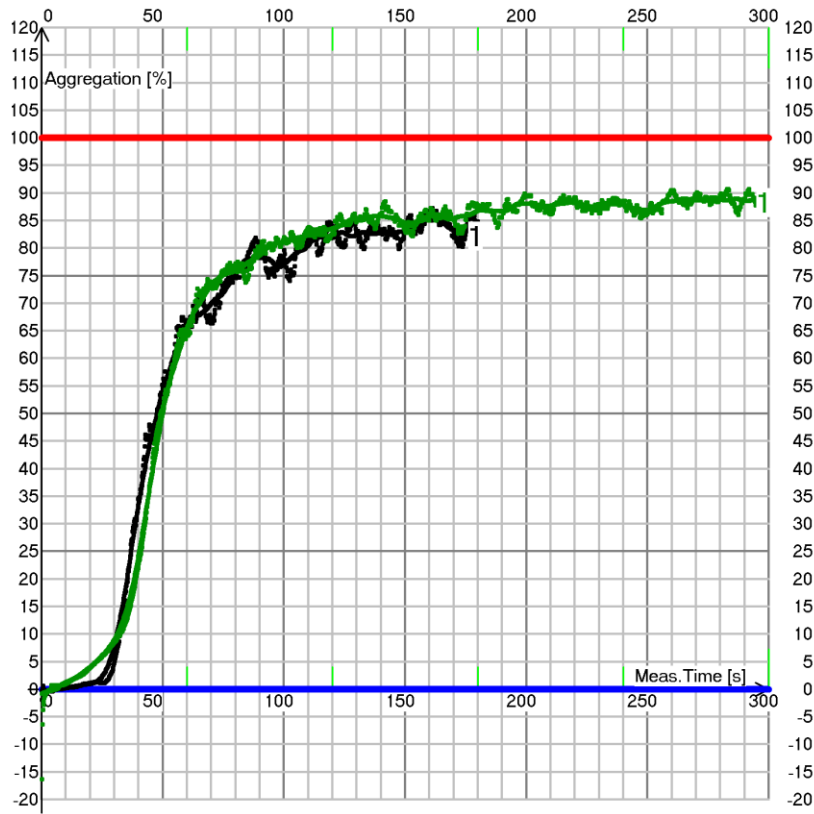
Both reagents were plotted against each other and lag phases and maximal aggregation were compared:

10 µg/ml Final	HORM	ABP
Max	85.22%	89.27%
Lag Phase	29.0s	34.4s
5 µg/ml Final	HORM	ABP
Max	86.71%	88.68%
Lag Phase	30.2s	36.4s
2.5 µg/ml Final	HORM	ABP
Max	82.89%	89.91%
Lag Phase	37.8s	37.6s
1.25 µg/ml Final	HORM	ABP
Max	85.87%	89.84%
Lag Phase	42.8s	42.8s

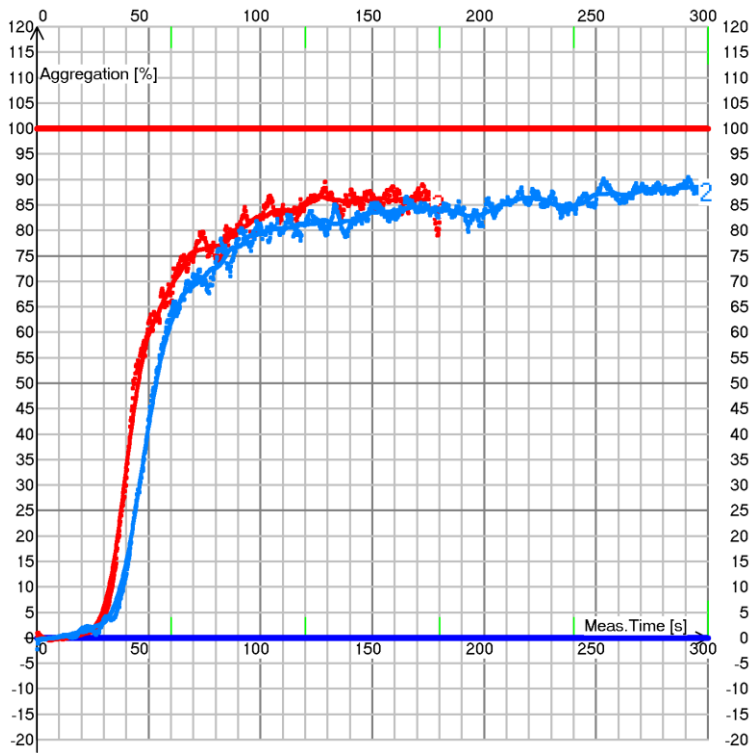
Graphical representation has been added below.

As seen by the testing undertaken, ABP collagen 1mg/ml has a direct aggregation response compared to Horm Collagen.

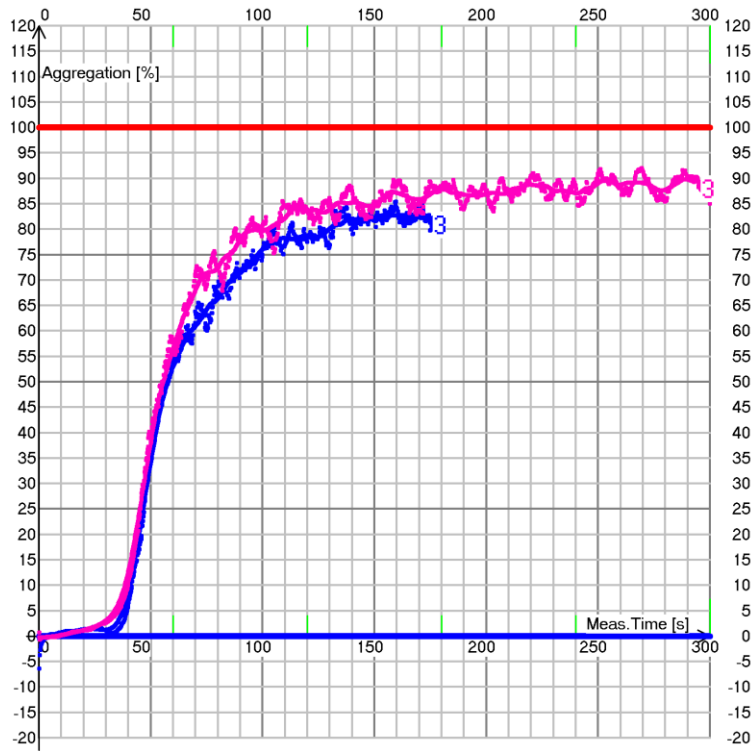
Stability data is to follow.



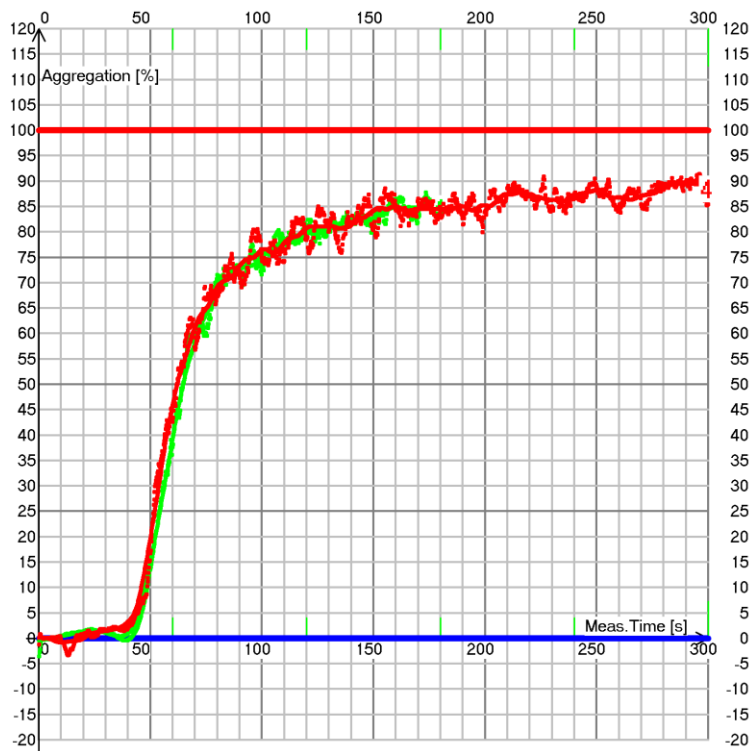
10 µg/ml final concentration (Black = Horm, Green = ABP)



5 µg/ml Comparison final concentration (Red=Horm, Blue=ABP)



2.5ug/ml Final concentration (Blue=Horm, Pink = ABP)



1.25ug/ml final collagen concentration (Green = Horm, Red= ABP)